

2273 series

COMPACT-PUSH WIRE connector for junction boxes

0,5 – 2,5 mm² „solid“

- 2-conductor terminal block, housing transparent, housing cover white
- 3-conductor terminal block, housing transparent, housing cover orange
- 4-conductor terminal block, housing transparent, housing cover red
- 5-conductor terminal block, housing transparent, housing cover yellow
- 8-conductor terminal block, housing transparent, housing cover light grey



Product No.	Packing
2273-202	100 pieces
2273-203	100 pieces
2273-204	100 pieces
2273-205	100 pieces
2273-208	50 pieces

Mounting carrier, orange

Mounting carrier, orange



Product No.	Packing
2273-500	10 pieces

273 series

PUSH WIRE connector for junction boxes

0,75 – 1,5 mm² „solid“

- 3-conductor terminal block, grey
- 5-conductor terminal block, grey
- 8-conductor terminal block, grey



Product No.	Packing
273-100	100 pieces
273-101	100 pieces
273-108	50 pieces

1 – 2,5 mm² „solid“

- 2-conductor terminal block, dark grey
- 3-conductor terminal block, dark grey
- 4-conductor terminal block, dark grey
- 5-conductor terminal block, dark grey
- 8-conductor terminal block, dark grey

Product No.	Packing
273-112	100 pieces
273-104	100 pieces
273-102	100 pieces
273-105	50 pieces
273-103	50 pieces

1,5 – 4 mm² „solid“

3-conductor terminal block, grey

Product No.	Packing
273-403	50 pieces

Mounting carrier, orange

Mounting carrier, orange



Product No.	Packing
273-150	10 pieces

222 series

Compact splicing connector, with operating levers, grey, 0,08 – 2,5 mm² „solid + fine stranded“/0,08 – 4 mm² „fine stranded“, continuous service



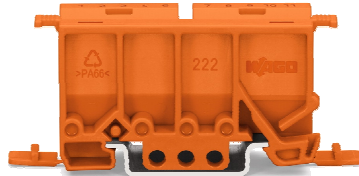
temperature 85 °C

2-conductor terminal block, grey/orange
3-conductor terminal block, grey/orange
5-conductor terminal block, grey/orange

Product No.	Packing
222-412	50 pieces
222-413	50 pieces
222-415	40 pieces

Mounting carrier, orange/Strain relief plate/Angled DIN-rail adapter

Mounting carrier, orange
Strain relief plate
Angled DIN-rail adapter



Product No.	Packing
222-500	10 pieces
222-505	10 pieces
222-510	10 pieces

773 series

PUSH WIRE connector for junction boxes

2,5 – 6 mm² „solid + fine stranded”

5-conductor terminal block, transparent/red



Product No.	Packing
773-173	50 pieces

Mounting carrier, orange

Mounting carrier, orange



Product No.	Packing
773-332	10 pieces

243 series

MICRO-PUSH WIRE connector for junctions boxes

0,6 – 0,8 mm ø „solid“

4-conductor terminal block, tamno sivi
4-conductor terminal block, svjetlo sivi
4-conductor terminal block, žuti
4-conductor terminal block, crveni

8-conductor terminal block, tamno sivi
8-conductor terminal block, svjetlo sivi
8-conductor terminal block, žuti
8-conductor terminal block, crveni



Product No.	Packing
243-204	100 pieces
243-304	100 pieces
243-504	100 pieces
243-804	100 pieces

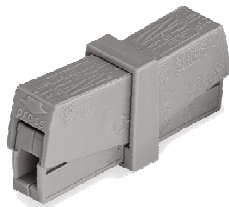
243-208	100 pieces
243-308	100 pieces
243-508	100 pieces
243-808	100 pieces

Mounting carrier, orange

Mounting carrier for 4 connectors, orange
Mounting carrier for 6 connectors, orange



Product No.	Packing
243-112	10 pieces
243-113	10 pieces



224 series

Lighting connector, standard version, continuous service temperature 105 °C, grey, white, installation side 1 – 2,5 mm², lighting side 0,5 – 2,5 mm²

1-conductor terminal block, grey
2-conductor terminal block, white

Product No.	Packing
224-101	100 pieces
224-112	100 pieces

Lighting connector, version for increased continuous service temperature of 120 °C, black, installation side 1 – 2,5 mm², lighting side 0,5 – 2,5 mm²

1-conductor terminal block, black
2-conductor terminal block, black

Product No.	Packing
224-104	100 pieces
224-114	100 pieces

„Service" connector, grey
0,5 – 2,5 mm² „solid + fine stranded"

„Service" connector, grey

Product No.	Packing
224-201	50 pieces

243 series

Connectors for KNX/EIB bus coupler units, mounted, with test slot, dark grey and red, light grey and yellow, Ø 0,6 – 0,8 mm „solid"

2 x 4-conductor terminal block, dark grey + red
2 x 4-conductor terminal block, light grey + yellow



Product No.	Packing
243-211	50 pieces
243-212	50 pieces